

Building Estimation

QUANTITY SHEET

Sr. No.	Item Description	No.	Length (m)	Width/Breadth (m)	Height/Depth (m)	Quantity	Unit
1	Earthwork in Excavation in Foundation:						
	Footing (1m x 1m)	11	2.200	2.200	1.580	84.12	cu m
	Depth From GL = 0.6 + 1 + 0.6						
	0.6 =Extra For working space						
	Total Qty=					84.12	cu m
2	Footing PCC						
	Footing (1m x 1m)	11	1.300	1.300	0.075	1.39	cu m
	Thickness = 0.075						
	D = 0.150 + 1.0 + 0.150						
	Total Qty=					1.39	cu m
3	Footing RCC						
	Base(1m x 1m)	11	1.000	1.000	0.450	4.95	cu m
	Thickness = 0.450						
	Total Qty=					4.95	cu m
4	Column up to Plinth Level RCC						
	Column	11	0.230	0.230	1.050	0.61	cu m
	Total Qty=					0.61	cu m
5	Back-filling						
5.a	Back-filling In Footing						
	Excavation Area	11	2.200	2.200	1.580	84.12	cu m
	Deduction						
	Footing P.C.C	-11	1.300	1.300	0.075	-1.39	cu m
	Footing RCC	-11	1.000	1.000	0.450	-4.95	cu m
	Footing Column	-11	0.230	0.230	1.050	-0.61	cu m
	5.a Total Qty=					77.16	cu m
5.b	Plinth Beam Back filling						
	Plinth area out to out	1	10.240	7.690	0.600	47.25	cu m
	Deduction						
	L-1	-3	10.240	0.230	0.600	-4.24	cu m
	L-2	-4	3.000	0.230	0.600	-1.66	cu m
	L-3	-3	4.000	0.230	0.600	-1.66	cu m
	L-4	-1	1.500	0.230	0.600	-0.21	cu m
	L-5	-1	2.315	0.230	0.600	-0.32	cu m

		5.b Total Qty=				39.17	cu m
		5.a + 5.b Total Qty=				116.33	cu m
6	Plinth Beam RCC						
	Beam (230 mm x 600 mm)						
	L-1	3	10.240	0.230	0.600	4.24	cu m
	L-2	4	3.000	0.230	0.600	1.66	cu m
	L-3	3	4.000	0.230	0.600	1.66	cu m
	L-4	1	1.500	0.230	0.600	0.21	cu m
	L-5	1	2.315	0.230	0.600	0.32	cu m
		Total Qty=				0.32	cu m
7	Grae Slab RCC						
	Plinth area out to out	1	10.240	7.690	0.100	7.87	cu m
	Deduction						
	Column	-11	0.230	0.230	0.100	-0.06	cu m
		Total Qty=				7.82	cu m
8	Column Up to Slab Level RCC						
	Column	11	0.230	0.230	2.650	1.54	cu m
		Total Qty=				1.54	cu m
9	Brick Masonry						
	230 mm thick wall Brick Masonry						
	Long Wall	3	10.240	0.230	2.650	18.72	cu m
	Shot wall-1	3	3.000	0.230	2.650	5.49	cu m
	Shot wall-1	1	3.000	0.230	1.200	0.83	cu m
	Shot Wall-2	3	4.000	0.230	2.650	7.31	cu m
	Deduction						
	Column	-11	0.230	0.230	2.650	-1.54	cu m
	Window W	-2	2.000	0.230	1.200	-1.10	cu m
	Window W1	-2	1.500	0.230	1.200	-0.83	cu m
	Window W2	-3	1.200	0.230	1.200	-0.99	cu m
	Window W3	-1	1.200	0.230	1.500	-0.41	cu m
	Door o	-2	1.200	0.230	2.100	-1.16	cu m
	Door D	-1	1.200	0.230	2.100	-0.58	cu m
	Door D1	-1	1.000	0.230	2.100	-0.48	cu m
	Door MS	-1	2.000	0.230	1.200	-0.55	cu m
	Vent	-1	0.900	0.230	0.600	-0.12	cu m
	Vent V1	-1	0.600	0.230	0.600	-0.08	cu m
		Total Qty 230 mm Thick Wall=				24.49	cu m
	115 mm thick wall Brick Masonry						

	Bath Room	1	1.500	0.115	2.650	0.46	cu m
	Passage wall	1	2.315	0.115	2.650	0.71	cu m
	Deduction						
	Door D2	-2	0.750	0.115	2.100	-0.36	cu m
	Parapet Wall						
	Long Wall	2	10.240	0.115	1.000	2.36	cu m
	Shot Wall	2	7.460	0.115	1.000	1.72	cu m
		Total Qty 115 mm Thick Wall=				4.87	cu m
10	In Side Plaster						
	Bed Room						
	Long Wall	2	4.000		3.000	24.00	Sq.m.
	Shot wall	2		3.000	3.000	18.00	Sq.m.
	Deduction						
	Door D1	-0.5	1.000		2.100	-1.05	Sq.m.
	Window W2	-0.5	1.200		1.000	-0.60	Sq.m.
	Window W3	-0.5	1.200		1.200	-0.72	Sq.m.
	Kitchen + Dining						
	Long Wall	2	4.000		3.000	24.00	Sq.m.
	Shot wall	2		4.000	3.000	24.00	Sq.m.
	Deduction						
	Door O	-0.5	1.200		2.100	-1.26	Sq.m.
	Window W2	-1	1.200		1.000	-1.20	Sq.m.
	Verandah						
	Long Wall	2	3.000		3.000	18.00	Sq.m.
	Shot wall	1		3.000	3.000	9.00	Sq.m.
	Shot wall	1		3.000	1.200	3.60	Sq.m.
	Deduction						
	Door MS	-0.5	1.200		1.200	-0.72	Sq.m.
	Door D	-0.5	1.200		2.100	-1.26	Sq.m.
	Window W	-0.5	2.000		1.200	-1.20	Sq.m.
	DRG. Room						
	Long Wall	2	5.550		3.000	33.30	Sq.m.
	Shot wall	2		4.000	3.000	24.00	Sq.m.
	Deduction						
	Door O	-1	1.200		2.100	-2.52	Sq.m.
	Door D	-0.5	1.200		1.200	-0.72	Sq.m.

		0.5					
	Window W 3	- 0.5	1.200		1.200	-0.72	Sq.m.
	Vent	- 0.5	0.600		0.600	-0.18	Sq.m.
	Vent V1	- 0.5	0.900		0.600	-0.27	Sq.m.
	Left Side	1	10.240		4.775	48.90	Sq.m.
	Deduction						
	Window W 1	-1	1.500		1.200	-1.80	Sq.m.
	Window W 2	- 0.5	1.200		1.000	-0.60	Sq.m.
	Parapet Wall						
	Long Wall	2	10.010		1.115	22.32	Sq.m.
	Shot Wall	2		7.460	1.000	14.92	cu m
			Total Out Side Plaster Qty =			197.87	Sq.m.
12	Ceiling Plaster						
	Bed Room	1	4.000	3.000		12.00	Sq.m.
	Kitchen + Dining	1	4.000	4.000		16.00	Sq.m.
	Verandah	1	3.000	3.000		9.00	Sq.m.
	DRG. Room	1	5.550	4.000		22.20	Sq.m.
	Bath Room	1	1.500	1.200		1.80	Sq.m.
	W.C	1	1.500	1.000		1.50	Sq.m.
	Passage	1	2.320	1.390		3.22	Sq.m.
			Total Out Side Plaster Qty =			65.72	Sq.m.
13	Slab RCC						
	Slab Area	1	10.240	7.690	0.100	7.87	cu m
	S-1	3	10.240	0.230	0.350	2.47	cu m
	S-2	4	3.000	0.230	0.350	0.97	cu m
	S-3	3	4.000	0.230	0.350	0.97	cu m
	S-4	1	1.500	0.230	0.350	0.12	cu m
	S-5	1	2.315	0.230	0.350	0.19	cu m
			Total RCC Slab Qty=			12.59	cu m
14	In Side Paint						
	Bed Room						
	Long Wall	2	4.000		3.000	24.00	Sq.m.
	Shot wall	2		3.000	3.000	18.00	Sq.m.
	Bed Room Ceiling	1	4.000	3.000		12.00	Sq.m.
	Deduction						
	Door D1	-1	1.000		2.100	-2.10	Sq.m.

	Window W2	-1	1.200		1.000	-1.20	Sq.m.
	Window W3	-1	1.200		1.200	-1.44	Sq.m.
	Kitchen + Dining						
	Long Wall	2	4.000		3.000	24.00	Sq.m.
	Shot wall	2		4.000	3.000	24.00	Sq.m.
	Kitchen + Dining Ceiling	1	4.000	4.000		16.00	Sq.m.
	Deduction						
	Door O	-1	1.200		2.100	-2.52	Sq.m.
	Window W2	-2	1.200		1.000	-2.40	Sq.m.
	Verandah						
	Long Wall	2	3.000		3.000	18.00	Sq.m.
	Shot wall	1		3.000	3.000	9.00	Sq.m.
	Shot wall	1		3.000	1.200	3.60	Sq.m.
	Verandah Ceiling	1	3.000	3.000		9.00	Sq.m.
	Deduction						
	Door MS	-1	1.200		1.200	-1.44	Sq.m.
	Door D	-1	1.200		2.100	-2.52	Sq.m.
	Window W	-1	2.000		1.200	-2.40	Sq.m.
	DRG. Room						
	Long Wall	2	5.550		3.000	33.30	Sq.m.
	Shot wall	2		4.000	3.000	24.00	Sq.m.
	DRG. Room Ceiling	1	5.550	4.000		22.20	Sq.m.
	Deduction						
	Door O	-2	1.200		2.100	-5.04	Sq.m.
	Door D	-1	1.200		1.200	-1.44	Sq.m.
	Window W	-1	2.000		1.200	-2.40	Sq.m.
	Window W1	-2	1.500		1.200	-3.60	Sq.m.
	Bath Room						
	Long Wall	2	1.500		3.000	9.00	Sq.m.
	Shot wall	2		1.200	3.000	7.20	Sq.m.
	Bath Room Ceiling	1	1.500	1.200		1.80	Sq.m.
	Deduction						
	Door D2	-1	0.750		2.100	-1.58	Sq.m.
	Vent V1	-1	0.900		0.600	-0.54	Sq.m.
	W.C						
	Long Wall	2	1.500		3.000	9.00	Sq.m.
	Shot wall	2		1.000	3.000	6.00	Sq.m.
	W.C Ceiling	1	1.500	1.000		1.50	Sq.m.
	Deduction						
	Door D2	-1	0.750		2.100	-1.58	Sq.m.
	Vent	-1	0.600		0.600	-0.36	Sq.m.
	Passage						

	Long Wall	2	2.320		3.000	13.92	Sq.m.
	Shot wall	2		1.390	3.000	8.34	Sq.m.
	Passage Ceiling	1	2.320	1.390		3.22	Sq.m.
	Deduction						
	Door D2	-2	0.750		2.100	-3.15	Sq.m.
	Door D1	-2	1.000		2.100	-4.20	Sq.m.
	Door O	-2	1.200		2.100	-5.04	Sq.m.
		Total Qty In Side Plaster=				252.14	Sq.m.
15	Out Side Plaster						
	Front Side	1	4.450		4.775	21.25	Sq.m.
		1	3.230		2.180	7.04	Sq.m.
	Lintel W	1	2.000	1.300		2.60	Sq.m.
	Deduction						
	Door MS	-1	1.200		1.200	-1.44	Sq.m.
	Window W	-1	2.000		1.200	-2.40	Sq.m.
	Back Side	1	7.690		4.775	36.72	Sq.m.
	Lintel W 2	2	1.200	1.300		3.12	Sq.m.
	Deduction						
	Window W 2	-1	1.200		1.000	-1.20	Sq.m.
	Right Side	1	10.240		4.775	48.90	Sq.m.
	Deduction						
	Window W	-1	2.000		1.200	-2.40	Sq.m.
	Window W 3	-1	1.200		1.200	-1.44	Sq.m.
	Vent	-1	0.600		0.600	-0.36	Sq.m.
	Vent V1	-1	0.900		0.600	-0.54	Sq.m.
	Left Side	1	10.240		4.775	48.90	Sq.m.
	Deduction						
	Window W 1	-2	1.500		1.200	-3.60	Sq.m.
	Window W 2	-1	1.200		1.000	-1.20	Sq.m.
	Parapet Wall						
	Long Wall	2	10.010		1.115	22.32	Sq.m.
	Shot Wall	2		7.460	1.000	14.92	Sq.m.
		Total Out Side Plaster Qty =				191.18	Sq.m.

Sum Data as per Drawing	Length	Width	Height
Plit area	10.24	7.69	
Footing P.C.C	1.3	1.3	0.075
Footing R.C.C	1	1	0.45
Column Size	0.23	0.23	
Plinth Beam	0.23		0.6

SCHEDULE OF OPENINGS

D = 1.20 x 2.10 m

D1 = 1.00 x 2.10 m

D2 = 0.75 x 2.10 m

MS = 1.20 x 2.10 m

W = 2.00 x 1.20 m

W1 = 1.50 x 1.20 m

W2 = 1.20 x 1.00 m

W3 = 1.20 x 1.20 m

V = 0.90 x 0.60 m

V1 = 0.60 x 0.60 m

CB = 1.50 x 1.80 m

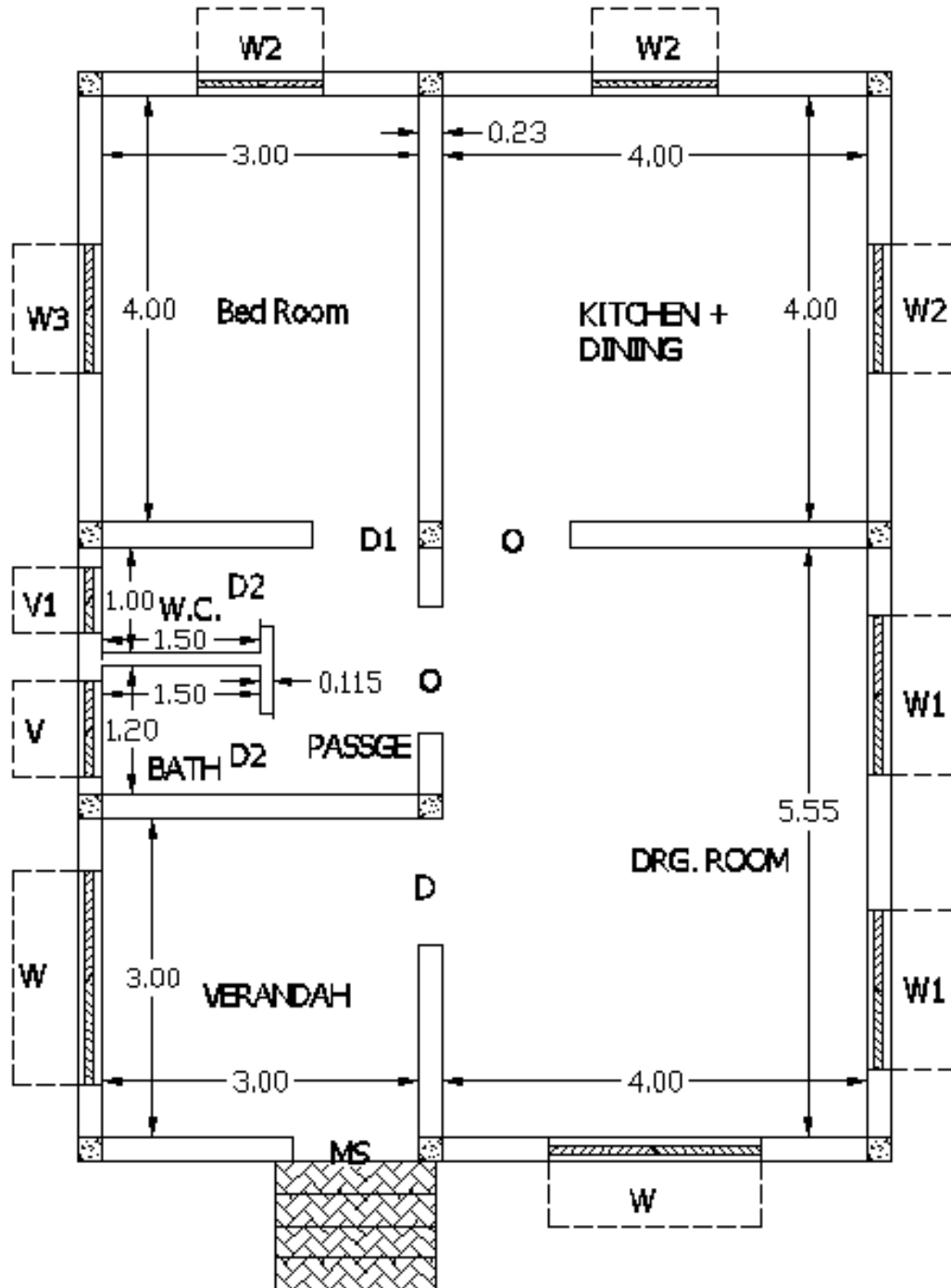
CB1 = 1.20 x 1.80 m

O = 1.20 x 2.10 m

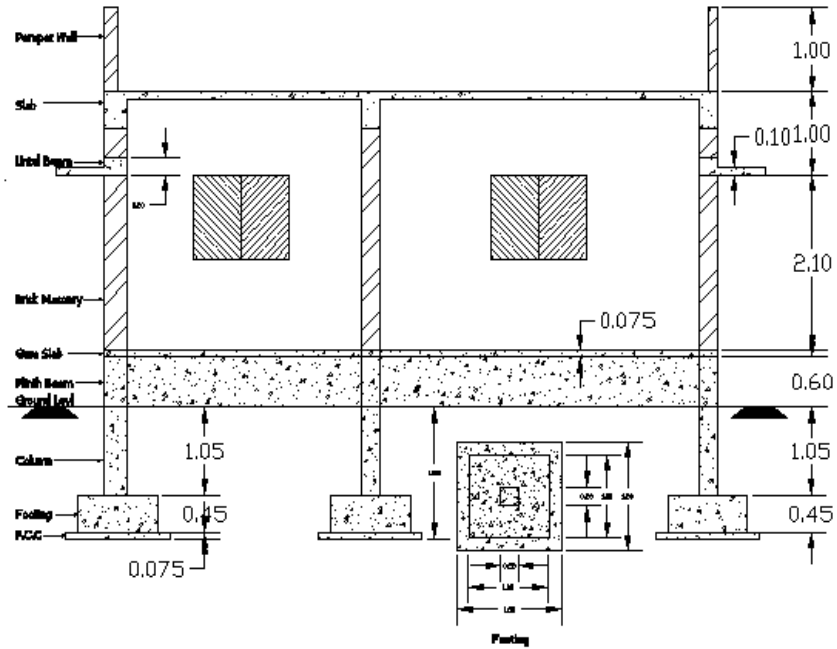
M.S. Grill = 2.0 x 1.20 m

Take Bearing of Lintel 10 cm.

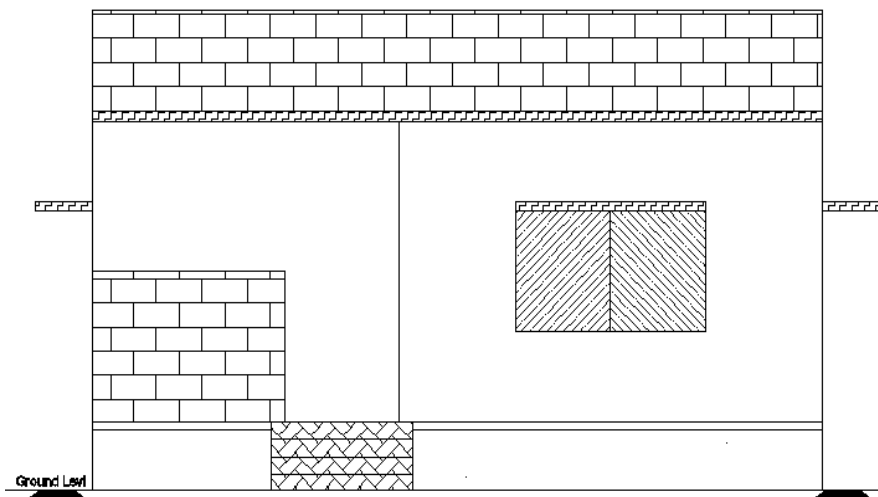
Plan



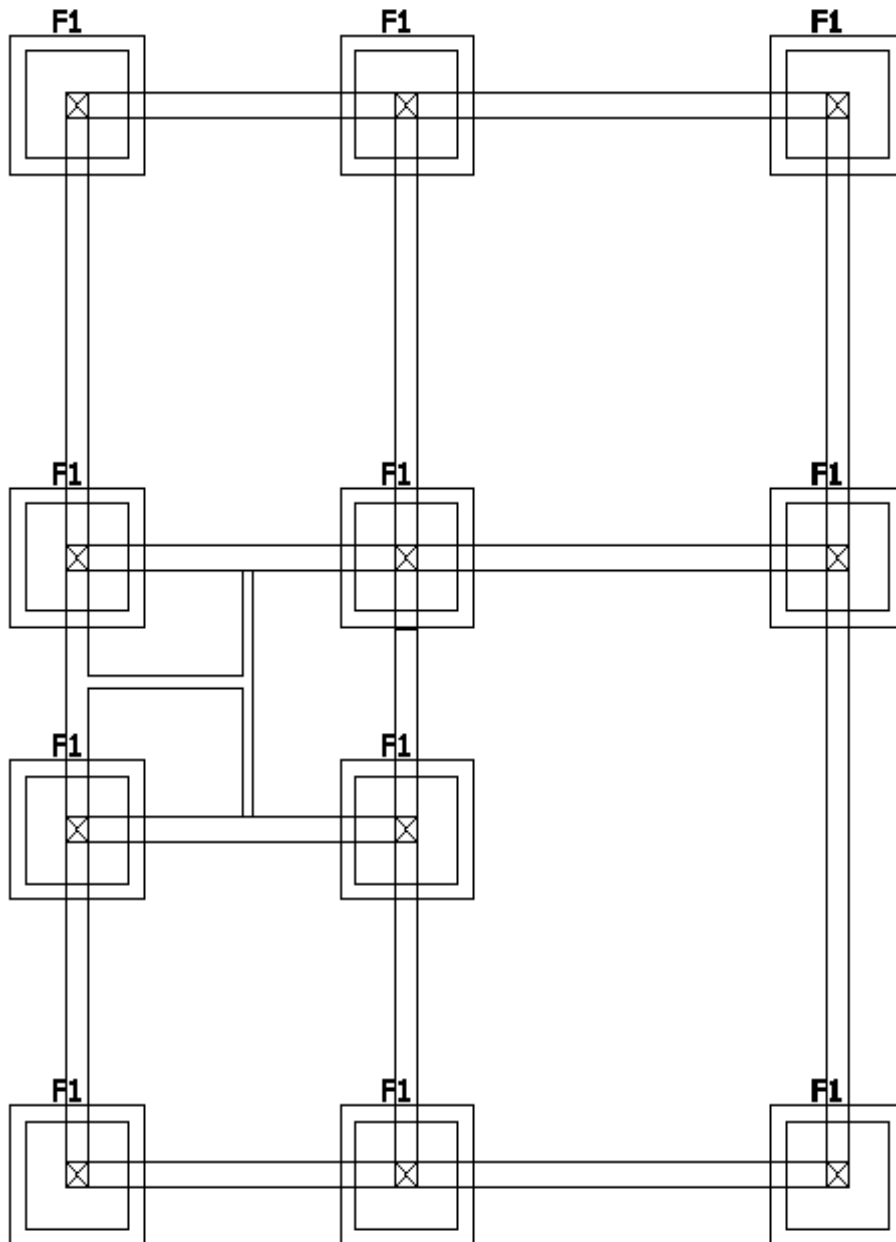
Section



Elevation



Footing Location



Slab Beam

